

# ROBERTS' STADIUM CLUB

1800 W UNIVERSITY AVE  
GAINESVILLE, FL 32603

THOMAS GROUP  
REALTY, LLC  
COMMERCIAL & LAND DIVISION

2ND FLOOR

FOR LEASE | \$30.00/SF NNN



## IN SUMMARY:

Place your business in the heart of the student market at the University of Florida. The Roberts' Stadium Club is a newly constructed class A Mixed-Use development less than 500 feet from Ben Hill Griffin football stadium. Presents tremendous game day exposure. This eight story development, with adjoining 88-car Parking Garage, offers commercial lease space for Retail, Restaurant and Office. We can work with any end-user to accommodate their requirements and needs. Second Floor available space is 7138sf and would consider dividing. Class A office space also available with spectacular views of Stadium and Campus.

## HIGHLIGHTS

- Lease Space Available - 7138sf
- \$30.00/sf NNN + \$7.37 (CAM, Taxes, & Insurance)
- Steps from University of Florida (55,000+ students)
- Class A Newly Constructed Development
- Available for Immediate Occupancy
- Adjoining 88-car Parking Garage
- Will Consider Dividing
- Additional Space Available



For information contact:

John Thomas | Senior VP, Realtor®

Commercial & Land Division

c: 352.538.4453

JohnThomas@ThomasGroupRealty.com

WWW.THOMASGROUPREALTY.COM

5341 SW 91st Terrace | Suite A

Gainesville | FL 32608

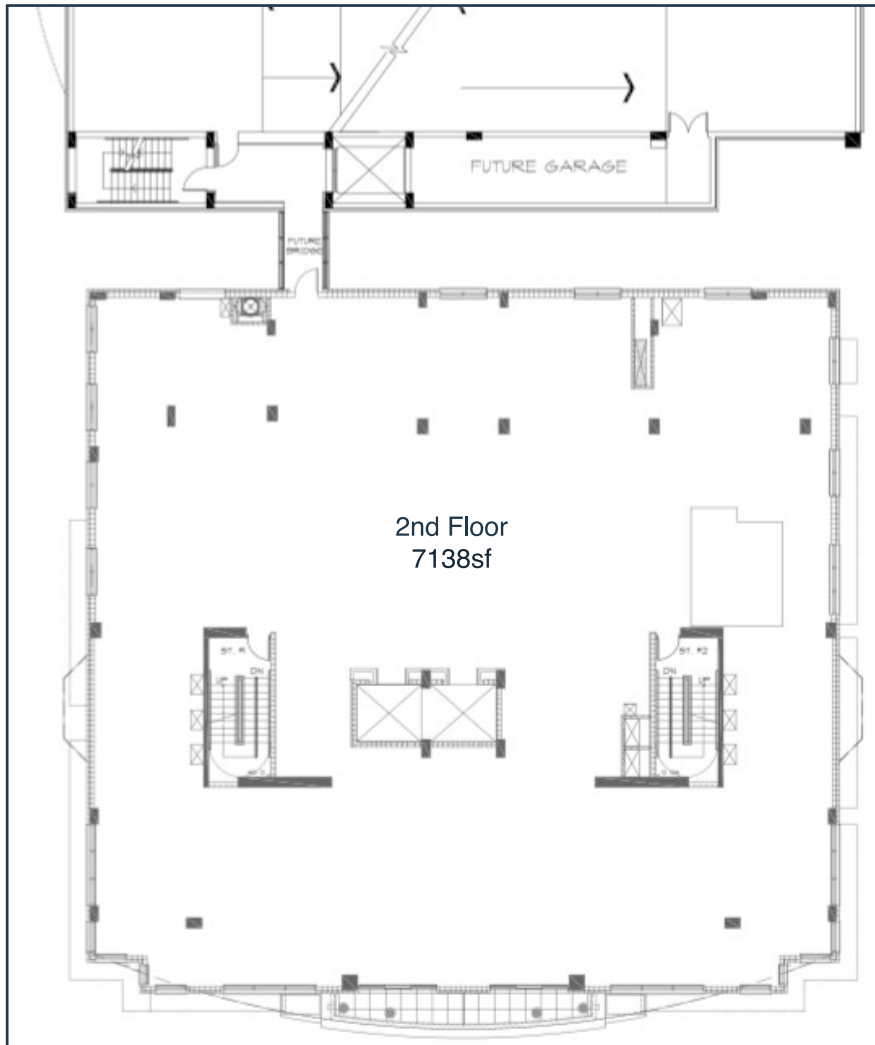
o: 352.226.8228

f: 352.872.5897

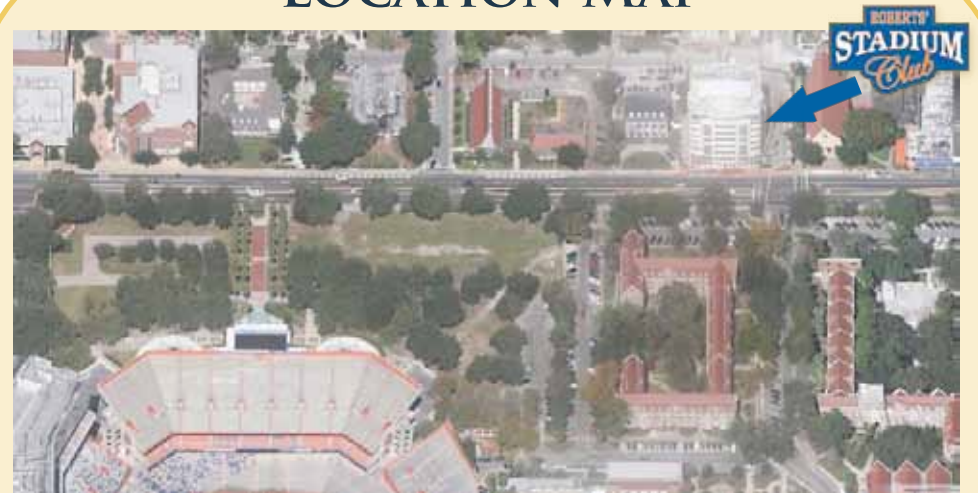
1800 W UNIVERSITY AVE, GAINESVILLE, FL 32603

# ROBERTS' STADIUM CLUB

THOMAS GROUP  
REALTY, LLC  
COMMERCIAL & LAND DIVISION



## LOCATION MAP



For information contact:

John Thomas | Senior VP, Realtor®

Commercial & Land Division

c: 352.538.4453

JohnThomas@ThomasGroupRealty.com

WWW.THOMASGROUPREALTY.COM

5341 SW 91st Terrace | Suite A

Gainesville | FL 32608

o: 352.226.8228

f: 352.872.5897