



# EXECUTIVE LUXURY

## LEVEL 5

1800 W. University Ave. Gainesville, FL 32603



<b>SUITE 510</b>	1,554 square ft
<b>SUITE 520</b>	1,552 square ft
<b>SUITE 530</b>	1,457 square ft
<b>SUITE 540</b>	807 square ft
<b>SUITE 550</b>	879 square ft

Minimum 1 year lease.

### HIGHLIGHTS

- Balcony views of Ben Hill Griffin Stadium and University of Florida Campus
- Open floor plans with balconies
- Walking distance to Ben Hill Griffin Stadium and University of Florida Campus
- Walking distance to several restaurants and shops
- Equipped with Custom Cabinetry featuring granite countertops
- Premium design appointments



For more information contact:

Ken Meers, Realtor  
(321)299-6983

John Thomas Group, LLC  
[ken@bhgrecommercialtg.com](mailto:ken@bhgrecommercialtg.com)

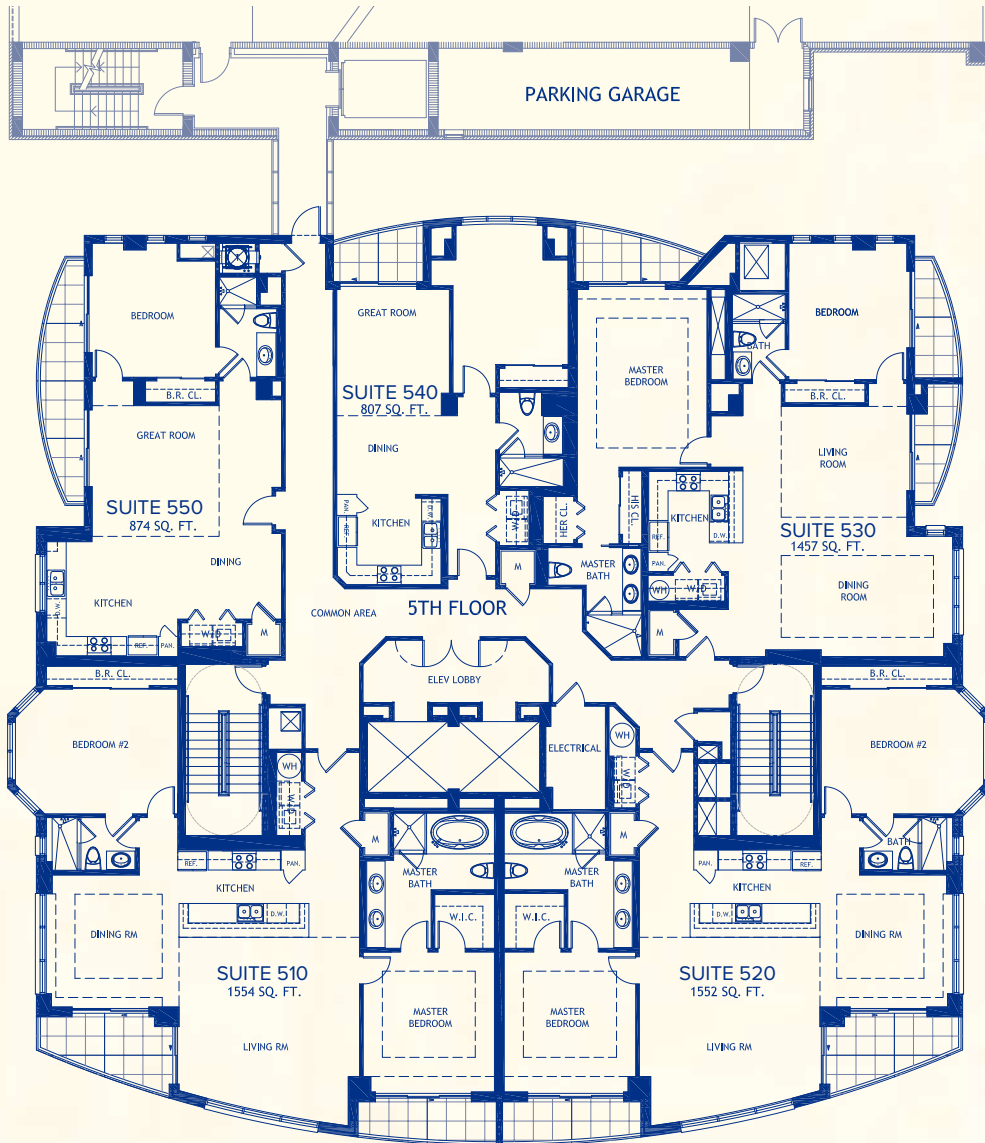




# EXECUTIVE LUXURY *Living*

## LEVEL 5

1800 W. University Ave. Gainesville, FL 32603



Residence Layouts - Level 5

### Spectacular Views



### Map Location



For more information contact:

Ken Meers, Realtor  
(321)299-6983

John Thomas Group, LLC  
ken@bhgrecommercialtg.com

