

ROBERTS' STADIUM CLUB

1800 W UNIVERSITY AVE
GAINESVILLE, FL 32603



1ST FLOOR

FOR LEASE



IN SUMMARY:

Place your business in the heart of the student market at the University of Florida. The Roberts' Stadium Club is a newly constructed class A Mixed-Use development less than 500 feet from Ben Hill Griffin football stadium. Presents tremendous game day exposure. This eight story development, with adjoining 88-car Parking Garage, offers commercial lease space for Retail, Restaurants and Office. We can work with any end-user to accommodate their requirements and needs. Ground Level available space is 8373sf and will divide. Class A office space also available with spectacular views of Stadium and Campus

HIGHLIGHTS

- Total Ground Floor Lease Space Available - 8373sf
- Steps from University of Florida (55,000+ students)
- Class A Newly Constructed Development
- Available for Immediate Occupancy
- Adjoining 88-car Parking Garage
- Additional Space Available | Will Consider Dividing



For information contact:

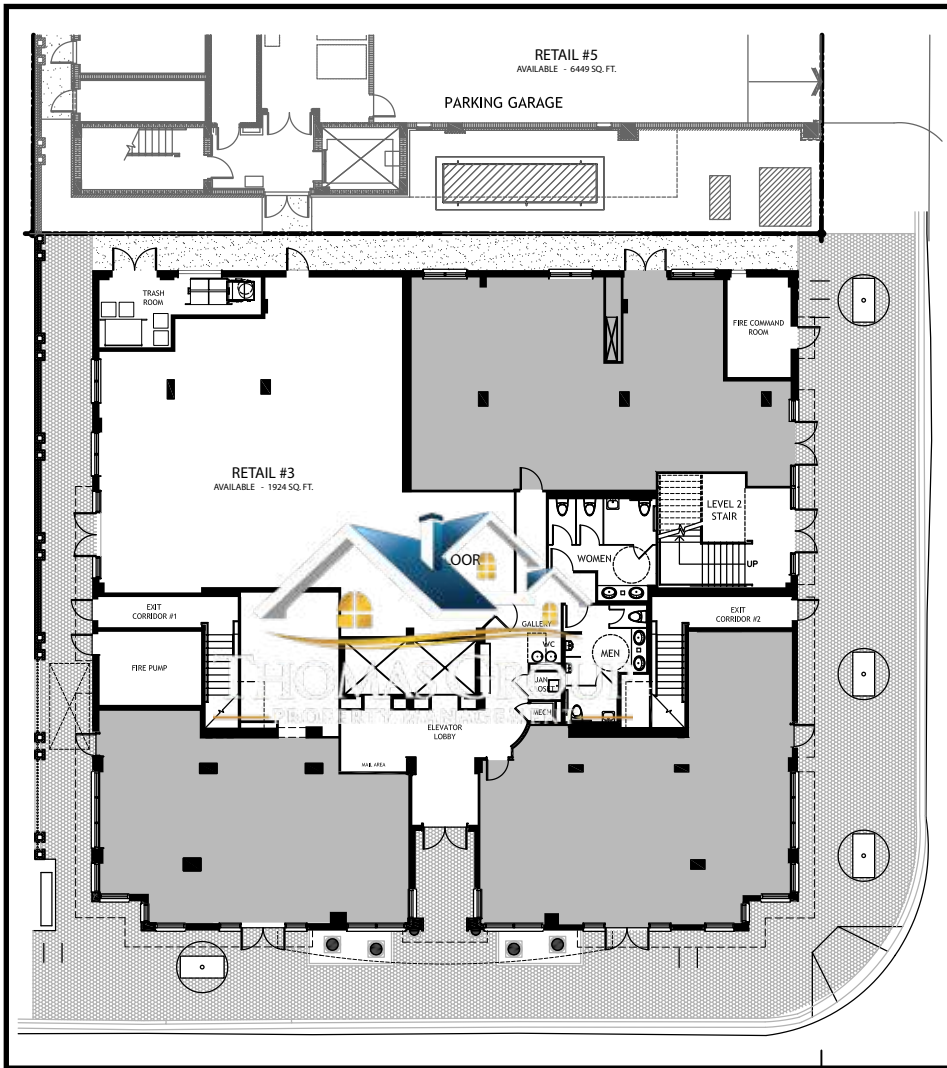
Brian Oen
The John Thomas Group
Cell: 352-494-2100
brian@bhgrecommercialtg.com



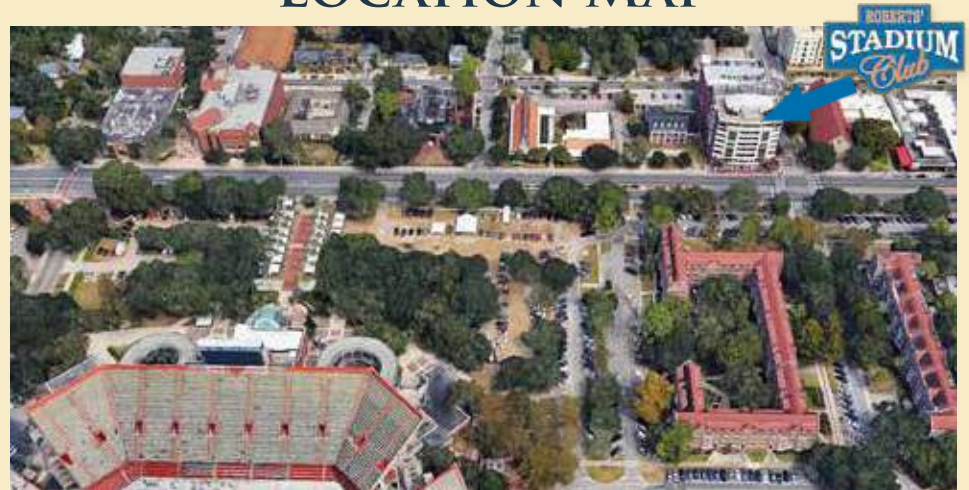
7515 W University Ave | Suite 201
Gainesville | FL 32607
o: (352) 335-4999
f: (352) 371-1526

1800 W UNIVERSITY AVE, GAINESVILLE, FL 32603

ROBERTS' STADIUM CLUB



LOCATION MAP



- Across University Ave from the University of Florida
- Retail #3: 1924sf in Robert's Stadium Club (1st flr)
- Retail #5: 6449sf in adjoining Parking Garage (1st flr)

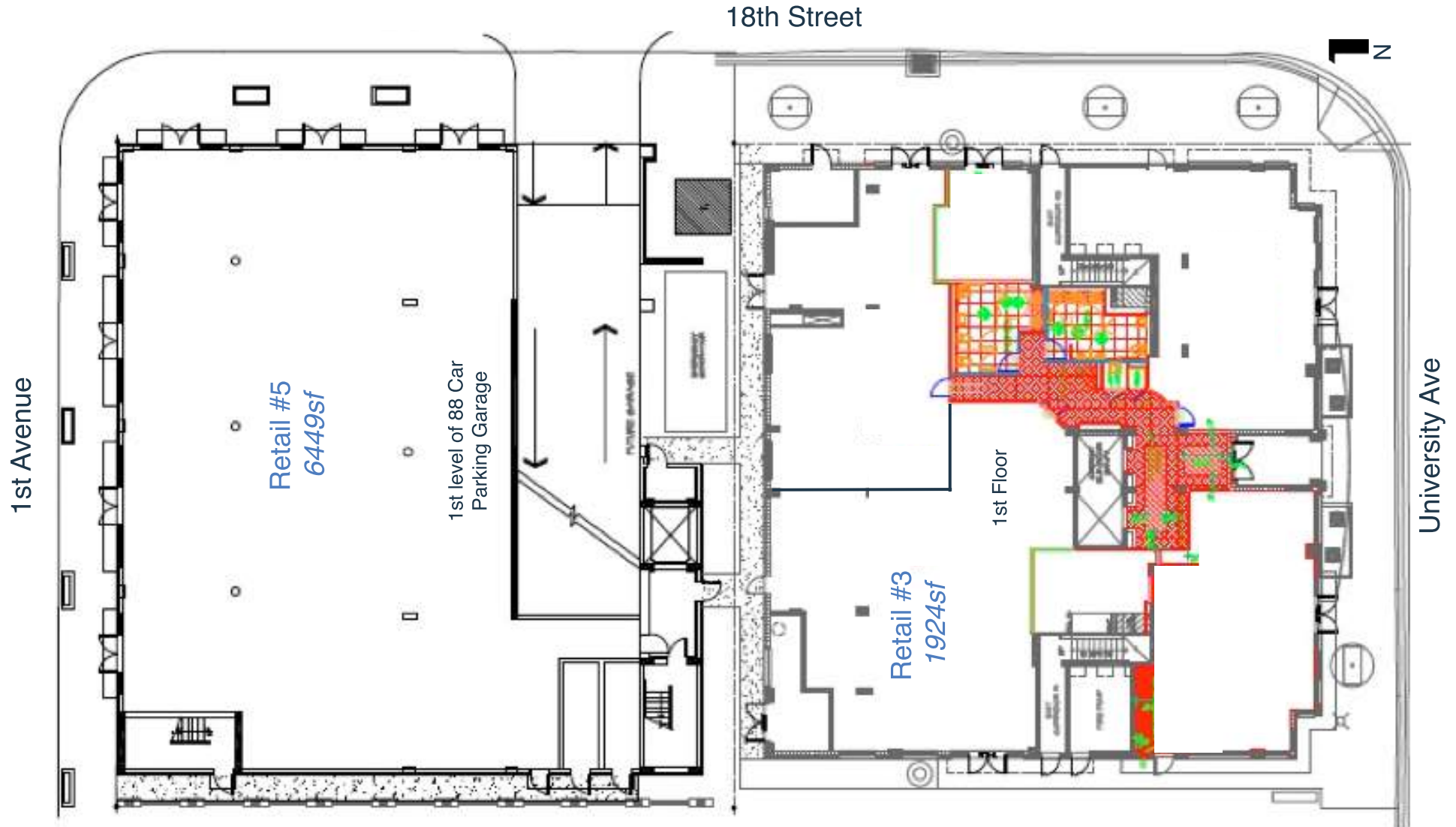
For information contact:

Brian Oen
The John Thomas Group
Cell: 352-494-2100
brian@bhgrecommercialtg.com

7515 W University Ave | Suite 201
Gainesville | FL 32607
o: (352) 335-4999
f: (352) 371-1526

1800 W UNIVERSITY AVE, GAINESVILLE, FL 32603

ROBERTS' STADIUM CLUB



For information contact:

Brian Oen
The John Thomas Group
Cell: 352-494-2100
brian@bhgrecommercialtg.com

7515 W University Ave | Suite 201
Gainesville | FL 32607
o: (352) 335-4999
f: (352) 371-1526