



EXECUTIVE LUXURY *Living*

LEVEL 7

1800 W. University Ave. Gainesville, FL 32603



SUITE 710	LEASED	\$3,200/mo.	1,554 square ft
SUITE 720	LEASED	\$3,200/mo.	1,552 square ft
SUITE 730	LEASED	\$2,500/mo.	1,457 square ft
SUITE 740	LEASED	\$1,600/mo.	914 square ft
SUITE 750	LEASED	\$1,850/mo.	874 square ft

Minimum 1 year lease.

HIGHLIGHTS

- Balcony views of Ben Hill Griffin Stadium and University of Florida Campus
- Open floor plans with balconies
- Walking distance to Ben Hill Griffin Stadium and University of Florida Campus
- Walking distance to several restaurants and shops
- Equipped with Custom Cabinetry featuring granite countertops
- Premium design appointments



For more information contact:

John Thomas, Senior VP, Realtor, Commercial & Land Division
(352)538-4453 JohnThomas@ThomasGroupRealty.com

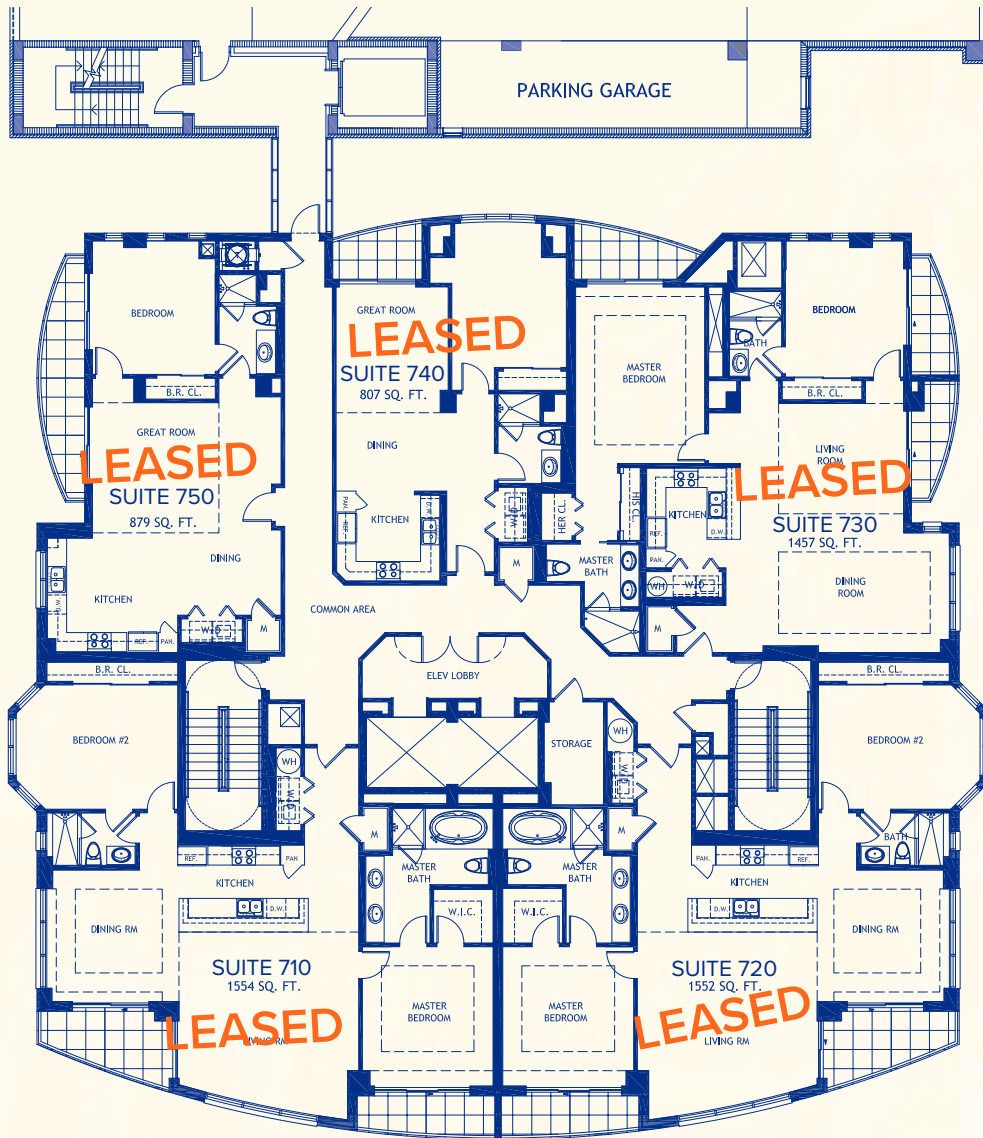
THOMAS GROUP
REALTY, LLC
COMMERCIAL & LAND DIVISION



EXECUTIVE LUXURY *Living*

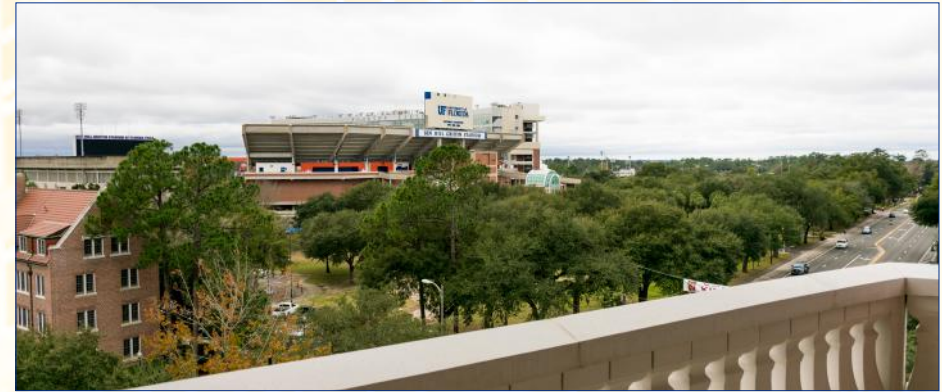
LEVEL 7

1800 W. University Ave. Gainesville, FL 32603

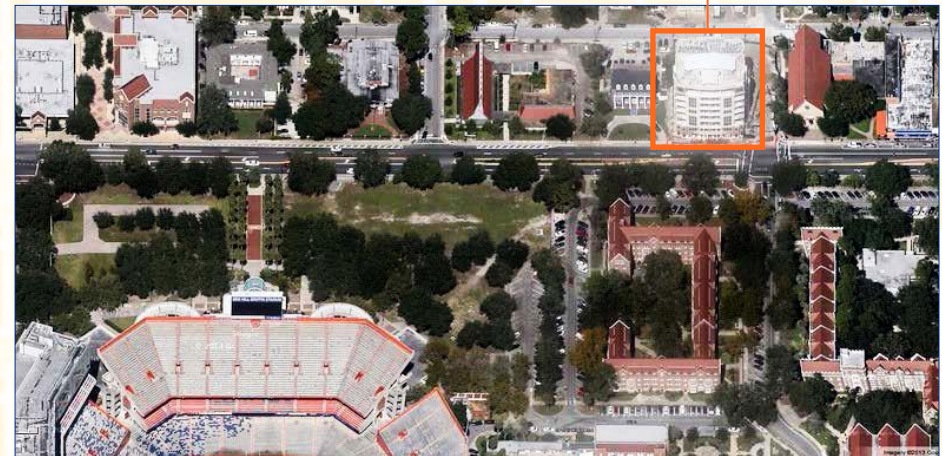


Residence Layouts - Level 7

Spectacular Views



Map Location



For more information contact:

John Thomas, Senior VP, Realtor, Commercial & Land Division
(352)538-4453 JohnThomas@ThomasGroupRealty.com

THOMAS GROUP
REALTY, LLC
COMMERCIAL & LAND DIVISION