

# ROBERTS' STADIUM CLUB

1800 W UNIVERSITY AVE  
GAINESVILLE, FL 32603



**COLDWELL BANKER**  
M.M. PARRISH  
REALTORS®

**2ND FLOOR**

**FOR LEASE | \$30.00/SF NNN**



## IN SUMMARY:

Place your business in the heart of the student market at the University of Florida. The Roberts' Stadium Club is a newly constructed class A Mixed-Use development less than 500 feet from Ben Hill Griffin football stadium. Presents tremendous game day exposure. This eight story development, with adjoining 88-car Parking Garage, offers commercial lease space for Retail, Restaurant and Office. We can work with any end-user to accommodate their requirements and needs. Second Floor available space is 7138sf and would consider dividing. Class A office space also available with spectacular views of Stadium and Campus.

## HIGHLIGHTS

- Lease Space Available - 7138sf
- \$30.00/sf NNN + \$7.37 (CAM, Taxes, & Insurance)
- Steps from University of Florida (55,000+ students)
- Class A Newly Constructed Development
- Available for Immediate Occupancy
- Adjoining 88-car Parking Garage
- Will Consider Dividing
- Additional Space Available



For information contact:

Craig and Michelle Carter | Realtor  
c: 352.339.4038  
ccarter@mmparrish.com

**MMPARRISH.COM**

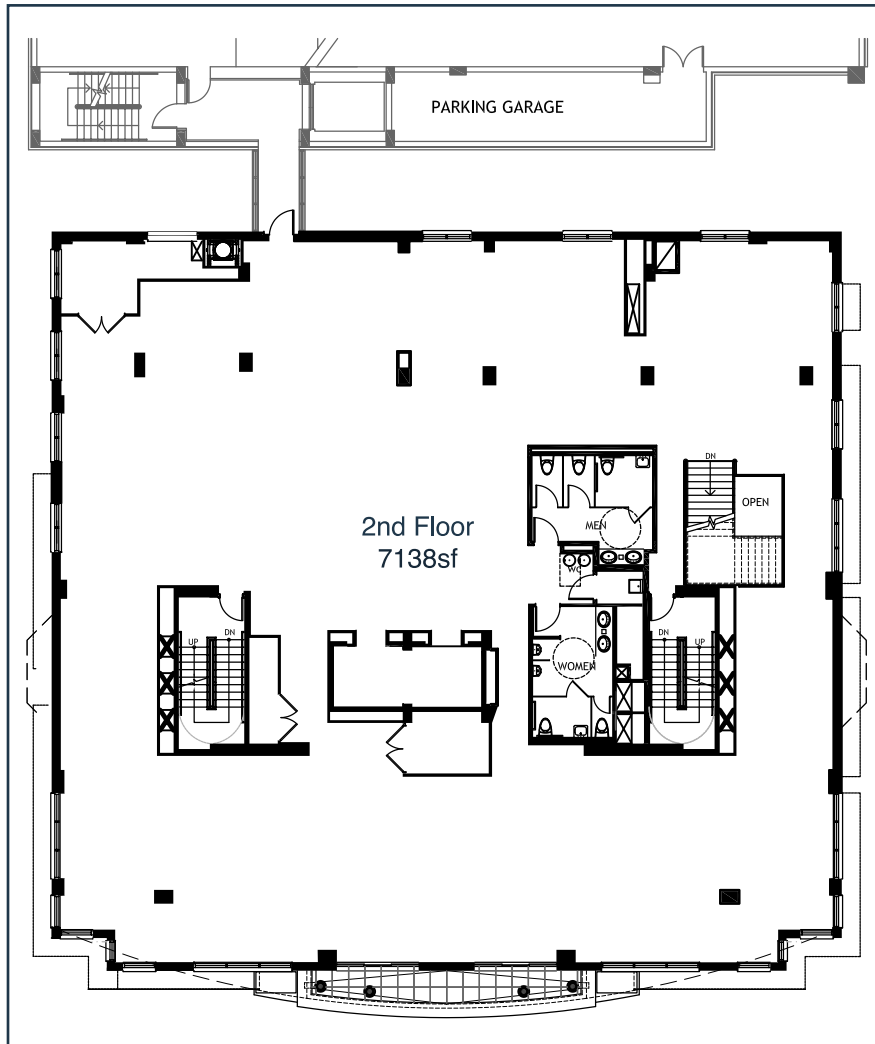
7515 W University Ave | Suite 201  
Gainesville | FL 32607  
o: (352) 335-4999  
f: (352) 371-1526

1800 W UNIVERSITY AVE, GAINESVILLE, FL 32603

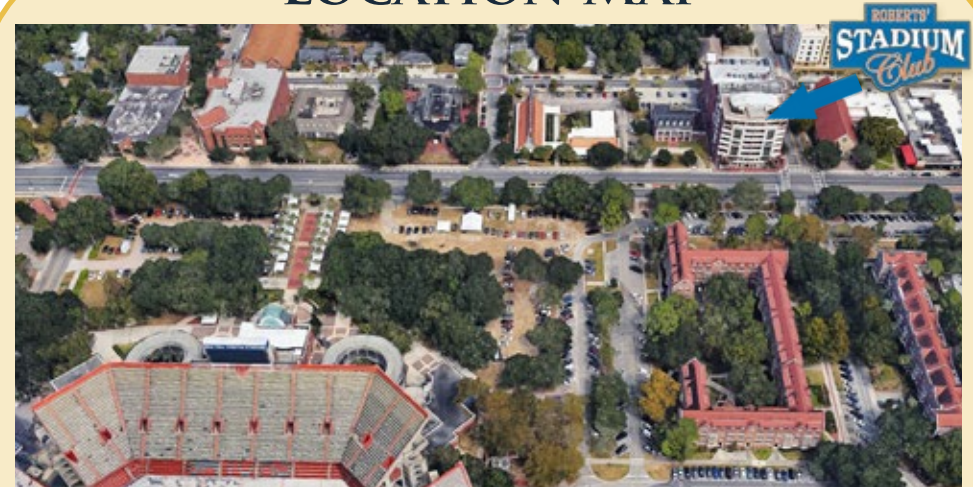


COLDWELL BANKER  
M.M. PARRISH  
REALTORS®

# ROBERTS' STADIUM CLUB



## LOCATION MAP



For information contact:

Craig and Michelle Carter | Realtor  
c: 352.339.4038  
ccarter@mmparrish.com

[MMPARRISH.COM](http://MMPARRISH.COM)

7515 W University Ave | Suite 201  
Gainesville | FL 32607  
o: (352) 335-4999  
f: (352) 371-1526